

PROTOS

**THE DESTINATION FOR ENERGY,
INNOVATION AND INDUSTRY**

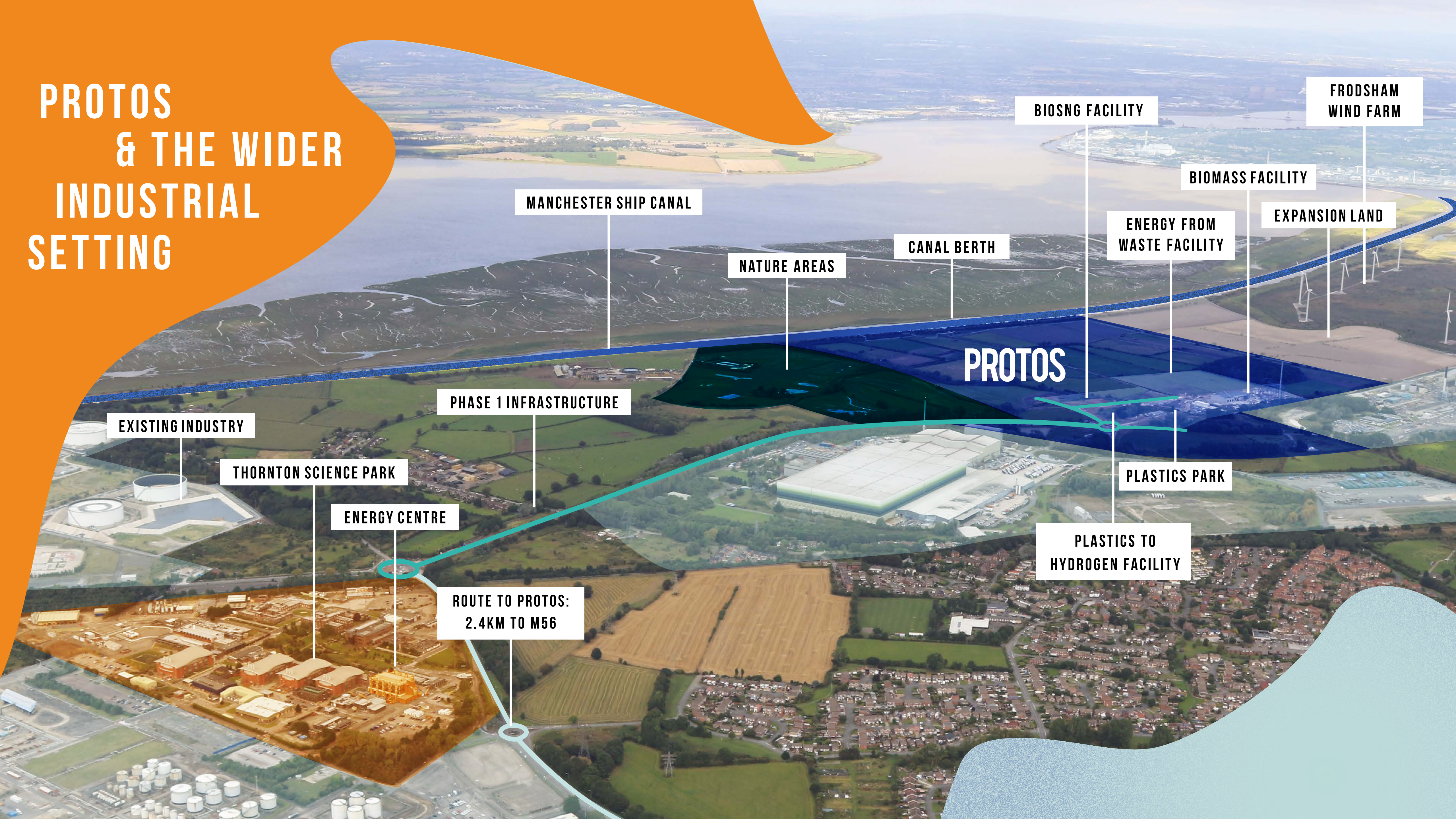


protos.co.uk

Protos, part of Peel L&P, is an energy and resource hub located near Ellesmere Port in the North West of England. It clusters together innovative technologies, connecting energy intensive businesses with sources of low carbon energy.



PROTOS & THE WIDER INDUSTRIAL SETTING



FRODSHAM WIND FARM

BIOSNG FACILITY

BIOMASS FACILITY

EXPANSION LAND

ENERGY FROM WASTE FACILITY

CANAL BERTH

NATURE AREAS

MANCHESTER SHIP CANAL

PROTOS

PHASE 1 INFRASTRUCTURE

EXISTING INDUSTRY

THORNTON SCIENCE PARK

ENERGY CENTRE

ROUTE TO PROTOS:
2.4KM TO M56

PLASTICS PARK

PLASTICS TO HYDROGEN FACILITY

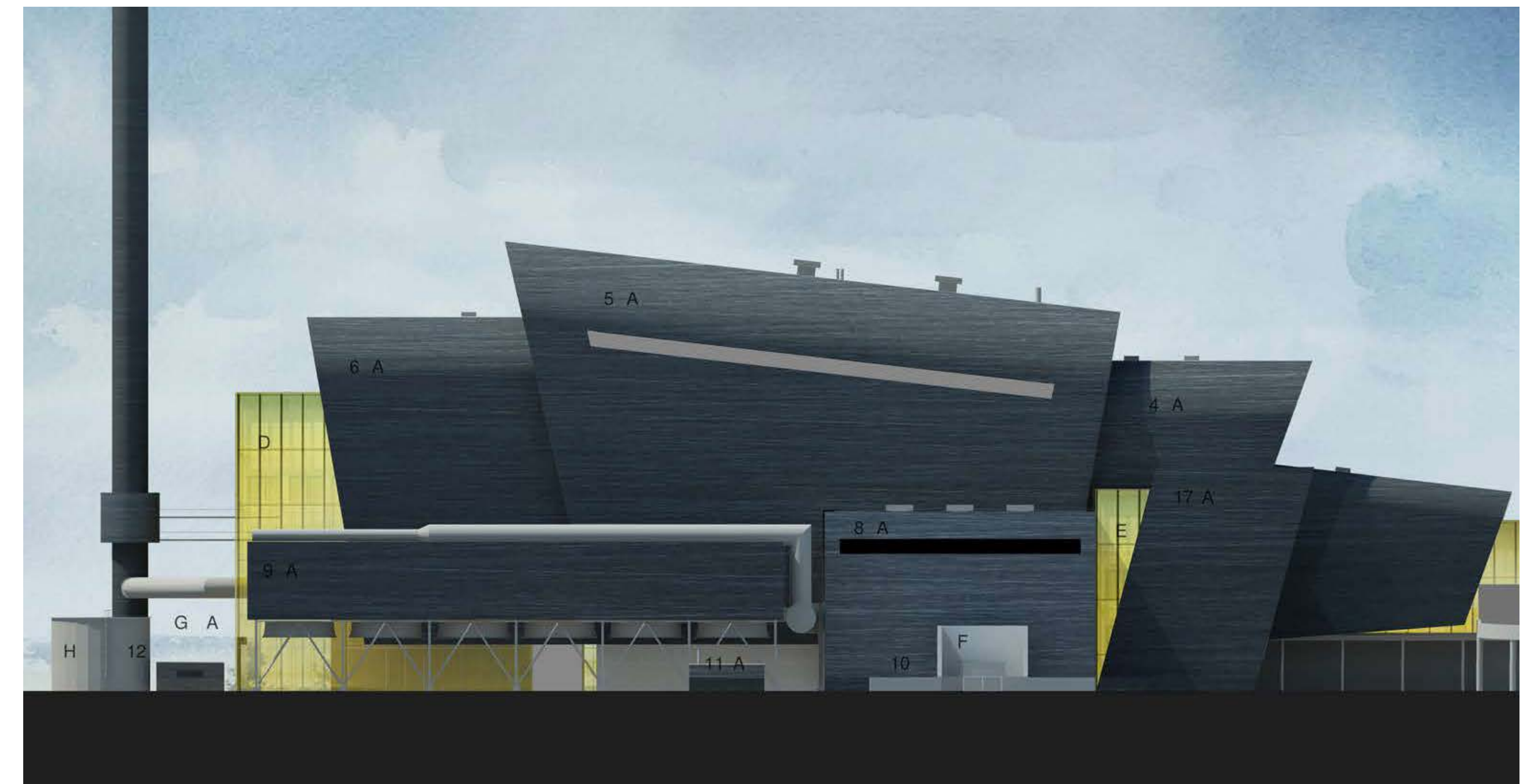


PROTOS CONSENTED SITE

At the core of Protos is a 54ha development site, with existing planning consent for industrial and energy uses. With £170 million already committed and Phase 1 infrastructure completed, plots at Protos are oven-ready. Consented for B2, B8 and Sui Generis uses the expansive and flexible site can see ideas and start-up enterprises grow to large-scale commercial facilities.

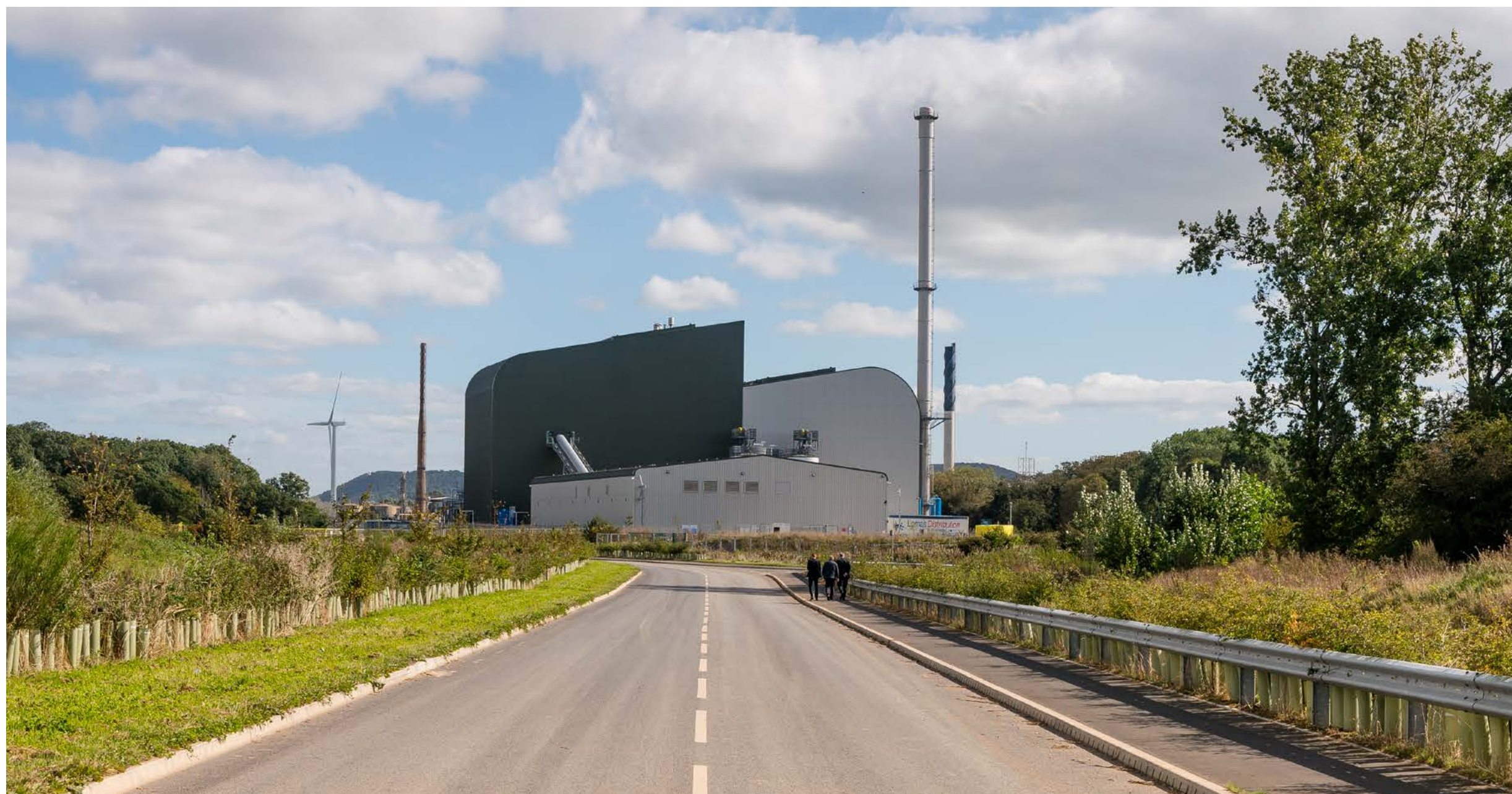
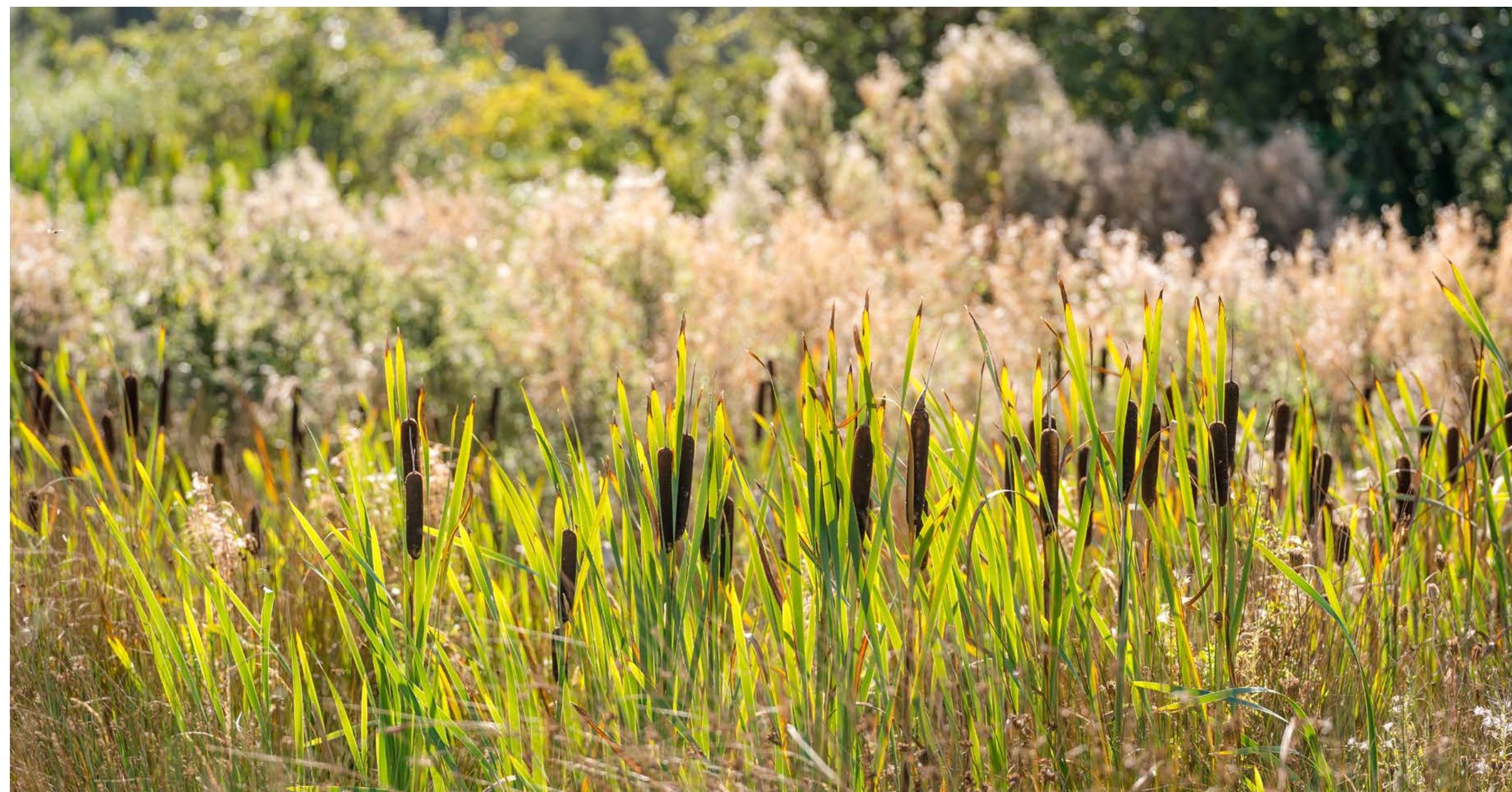
ENERGY FROM WASTE

A modern Energy from Waste (EfW) facility will occupy plot 8 at Protos, generating up to 49MW of sustainable energy from up to 350,000 tonnes of commercial and industrial waste per year. Providing a direct source of power from the heart of Protos, the facility will also create up to 300 jobs during construction and 50 during operation.



NATURE AREAS

Over 50 hectares of land is dedicated to nature at Protos. Snipe Haven and Goldfinch Meadows are two purpose-built habitats which are home to an array of flowers, butterflies and birds.



BIOMASS FACILITY

Operational biomass facility that uses up to 170,000 tonnes of waste wood each year to generate 21.5MW of electricity. This is enough low carbon energy to power over 40,000 homes each year.



PLASTICS PARK

Providing a complete solution for plastic waste, this UK first Plastics Park will include a variety of facilities such as a pioneering waste plastic to hydrogen facility, utilising technology developed at Thornton Science Park.

BIOSNG PLANT

This £150m Bio-Substitute Natural Gas plant will use up to 175,000 tonnes of bioresources (including unrecyclable wood) to create renewable gas for up to 1,000 low carbon HGVs and buses each year.



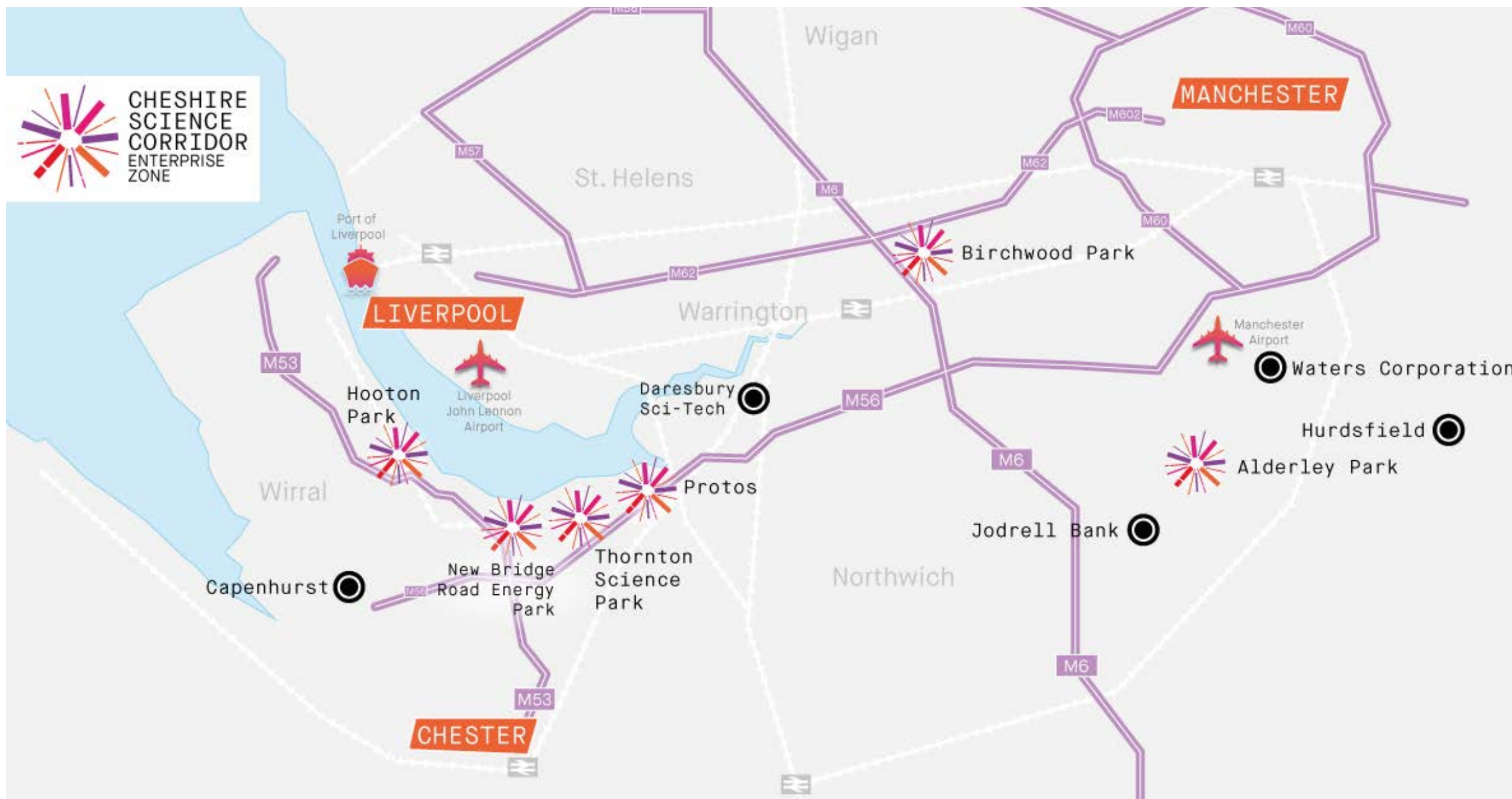
CONNECTIVITY

Such a strategic location means unparalleled connectivity to the region and beyond. With a dry cargo berth at the site, Protos boasts access to the Manchester Ship Canal, a northern link for some 7.5 million tonnes of cargo each year, owned and managed by Peel Ports. By road the site benefits from close access to the motorway network via J14 of the M56 and J11 of the M53, linking Protos to international airports in Liverpool and Manchester. In addition, an on-site rail siding completes the multi-modal package.



PHASE 1 INFRASTRUCTURE

Construction on the Phase 1 infrastructure at Protos, made possible by a £5 million loan from the North West Evergreen Fund was completed in December 2016. Supported by European Regional Development Funding and other backers, the loan kick-started delivery of widening of the private access road; an overhaul of the local road network; and construction of internal site roads and roundabouts.



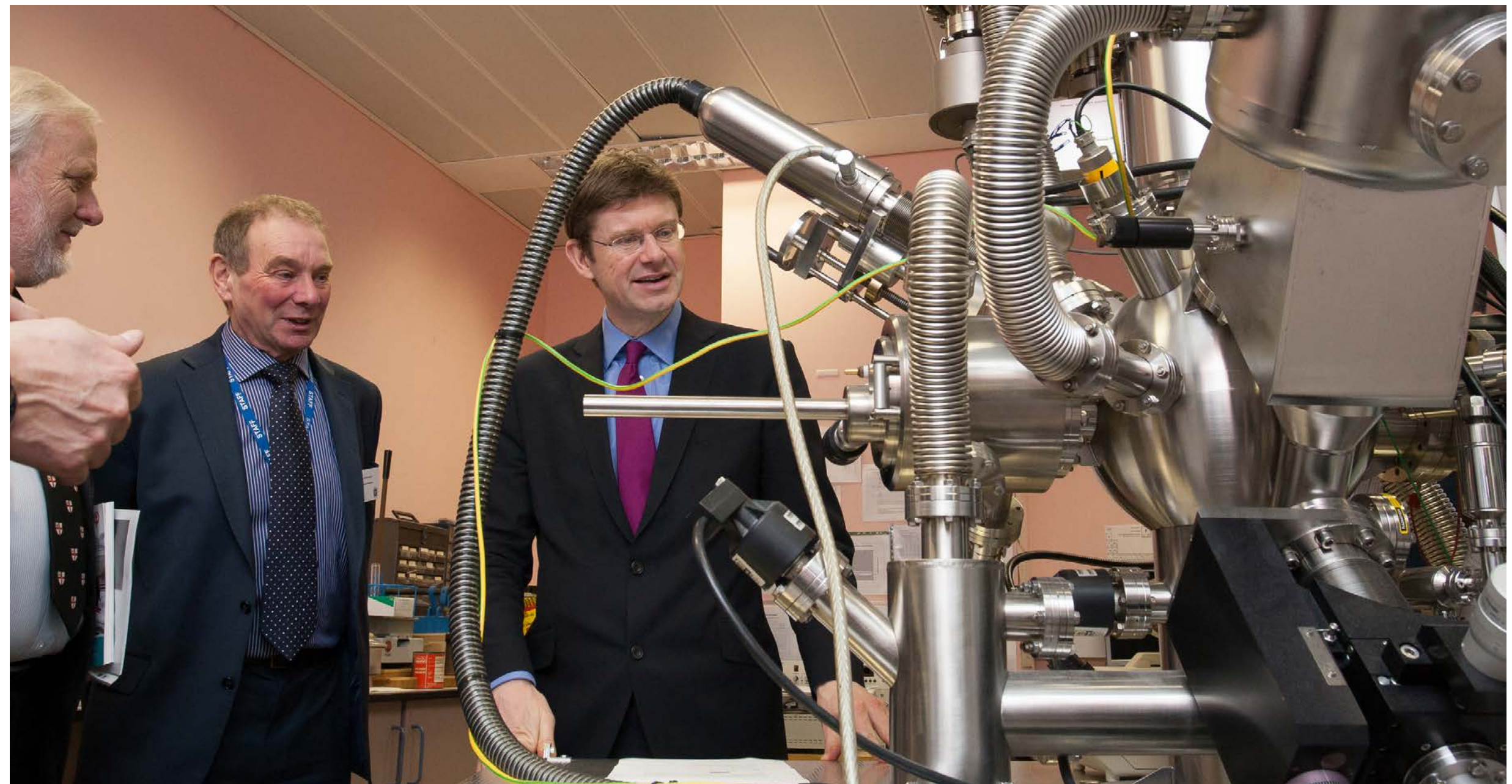
CHESHIRE SCIENCE CORRIDOR ENTERPRISE ZONE

The Cheshire Science Corridor Enterprise Zone (EZ) covers over 100 hectares and is set to attract over 20,000 jobs to the region. Protos forms part of an investment portfolio of internationally-recognised facilities whilst allowing occupiers to tap into available Enhanced Capital Allowances, an attractive driver for young enterprise and start-ups.

THORNTON SCIENCE PARK/ ENERGY CENTRE AT THORNTON

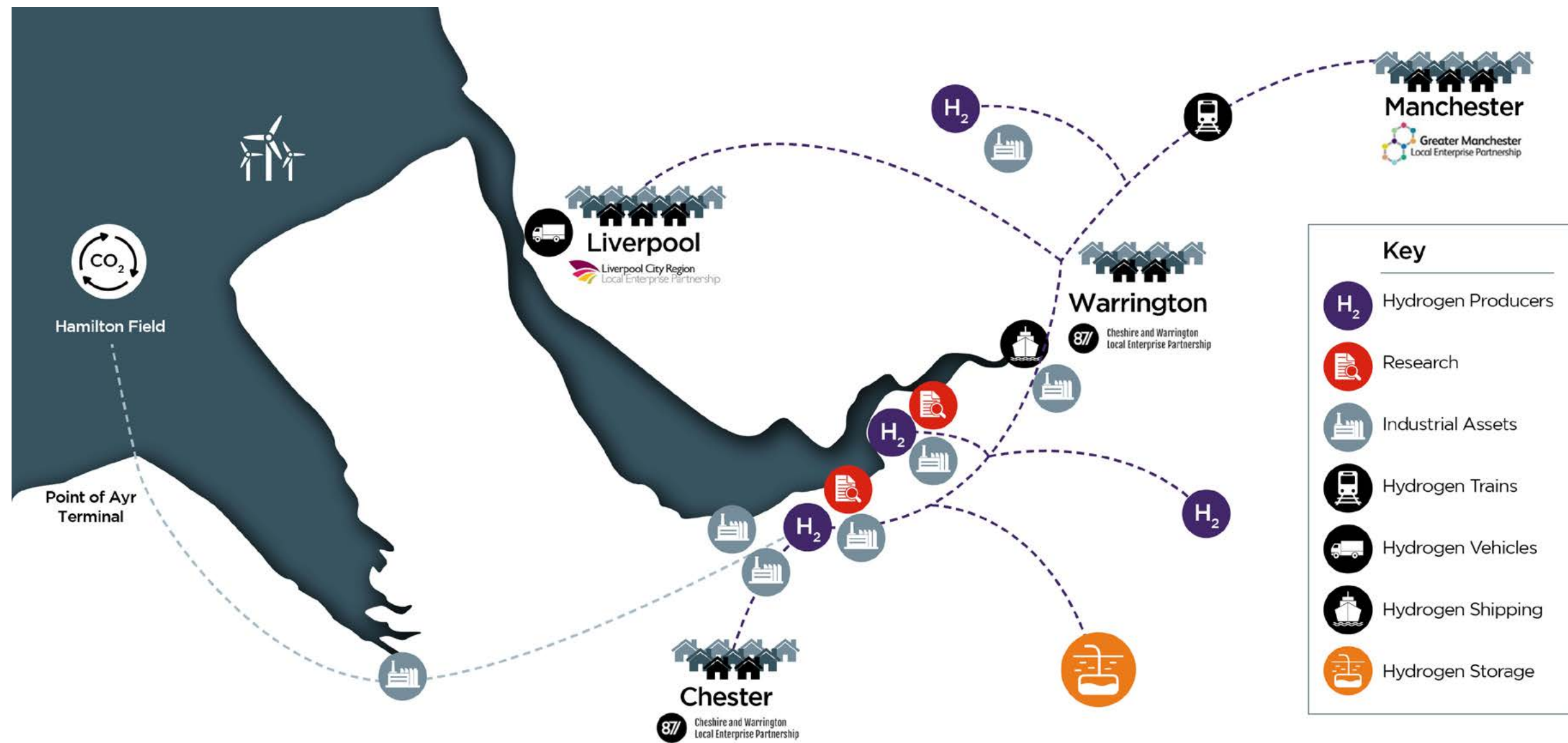
Thornton Science Park, the University of Chester's high-tech home to its Faculty of Science and Engineering Department, offers investors and occupiers unmatched access to a skilled and futureproof workforce.

Launched in 2017, the Energy Centre at Thornton is a state-of-the-art environment which allows companies to develop, test and demonstrate new energy supply and distribution technologies at scale.



NORTHERN INDUSTRIAL POWERHOUSE

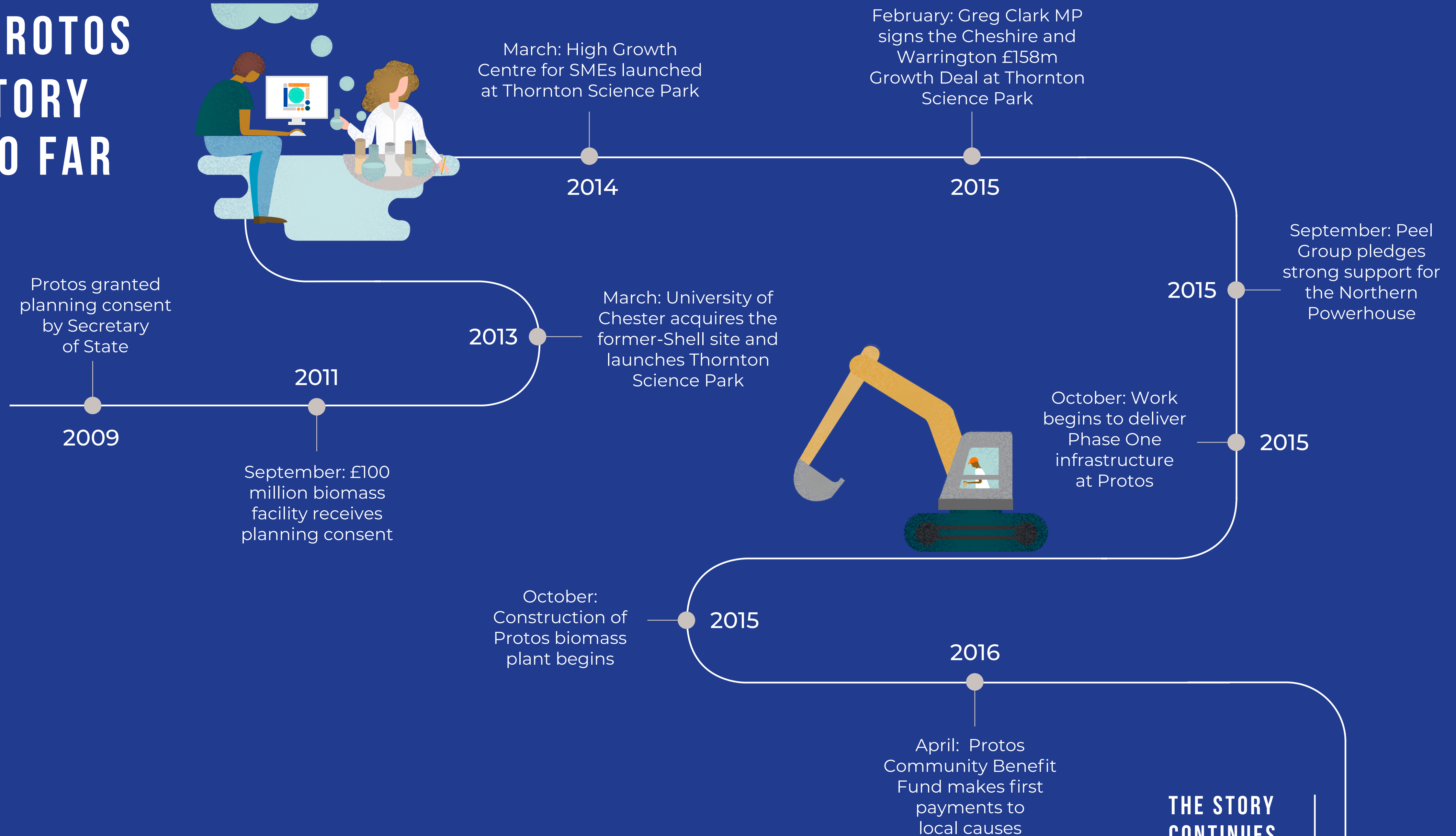
Protos challenges traditional models by clustering innovative businesses together to encourage enterprise and economic growth. The destination sits at the heart of the North West's industrial corridor, with strategic links to the Cheshire and Warrington LEP, Cheshire Energy Hub, Ellesmere Port Development Board, Atlantic Gateway and Peel Ports.



NORTH WEST HYDROGEN ALLIANCE

The North West of England has the industry, infrastructure and innovation to make hydrogen energy a reality. The North West Hydrogen Alliance brings together some of the UK's most influential organisations driving forward the work to develop the region as the UK's primary hydrogen economy. The alliance was formed to promote all current hydrogen initiatives based in the North West and take ownership of our future as one of the leading decarbonised energy clusters in the UK.

PROTOS THE STORY SO FAR



THE STORY
CONTINUES... ↓



May: Cheshire Science Corridor Enterprise Zone officially launched

2016

2016

December: Work to deliver Phase One infrastructure completed

2016

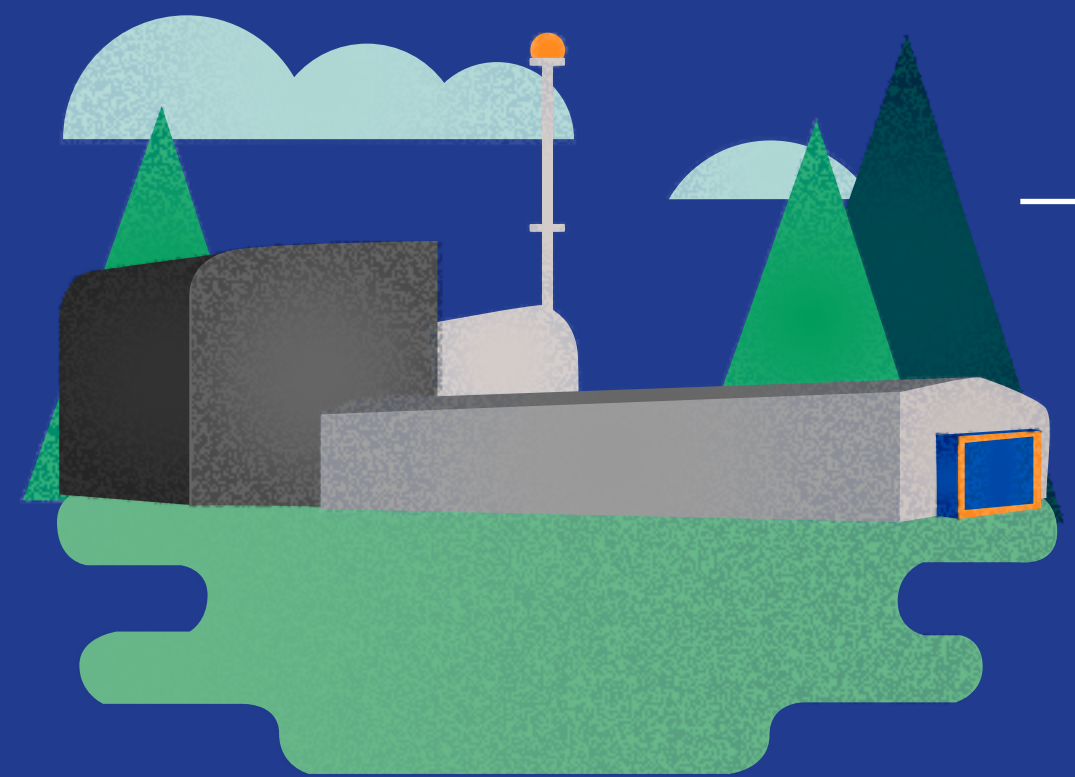
November: Protos becomes the only energy-focused project in the Government's Northern Powerhouse Investment Portfolio

2017

January: Protos is officially launched by the Minister for the Northern Powerhouse

December: North West Hydrogen Alliance launched

2018



March: Biomass facility at Protos fully commissioned and operational

2019

Consent granted for £150m Bio-Substitute Natural Gas plant

2019

Consent granted for UK first waste plastic to hydrogen facility

2020

PROTOS

Protos, Grinsome Road,
Cheshire, CH2 4RB

Please visit our **website** for satnav directions

Registered address:
Peel L&P Venus Building, 1 Old Park Lane,
TraffordCity, Manchester M41 7HA

info@protos.co.uk

protos.co.uk

 [@ThisIsProtos](https://twitter.com/ThisIsProtos)

 [Protos](https://www.linkedin.com/company/protos)



Please consider the environment before printing. This brochure is not intended for printing purposes and has been created to view on screen only.

THE DESTINATION FOR ENERGY, INNOVATION AND INDUSTRY

Protos, part of Peel L&P, is a home for innovative technologies in energy generation and resource management. As we move towards net zero carbon emissions, Protos can help businesses meet their sustainability objectives and develop a blueprint for the rest of the UK.

To find out more about how you could be part of Protos, please **get in touch**.